

Gorge Handweavers Guild

October 2020

All of our scheduled workshops, sales, etc. were cancelled because of the pandemic.

Samples of work by member weavers -

Weaver Sue Tibbott:



Above: 16/2 twill cotton napkins

Left: 8/2 twill cotton towels

Below on left: 8/2 cotton, plain weave with inlay
On right: 8/2 tencel shawls



Weaver Ruth Dye

Swedish Art Weaving

Ruth devised a way to weave ophampta on her 10 shaft Glimakra. By using a bungee cord and regular heddles, she was able to weave ophampta with 8 different pattern changes. Faster than pick up, but was necessary to use a sword to make a shed large enough to get the shuttle through.

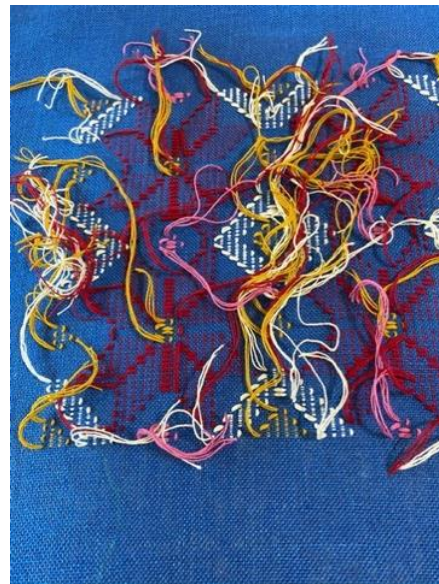


Using a stick attached to shaft 1 and 2 on my Glimakra Ideal loom I turned it into a shaft switching loom. Also dyed the wool rug yarn in gradations from ox blood to persimmon using Dharma Acid dye for wool.



More Swedish Art Weaves -

Practicing dukagang pick up linen warp with wool pattern yarn. Done on 4 shafts



Weaver Mary Davis

I've been using up the Pendleton selvages I have collected over the years. The warps are carpet warp set at 6 epi and are woven in plain weave. I enjoyed making them and I'm very happy to have used all those selvages up !!



I am attempting to use up various yarns that have been in my stash for a long time. These throws were woven in double plain weave. The yellow and pink ones are 100% wool and were woven at 6 epi and the blue ones content is probably a blend and were woven at 8 epi. I'm getting better at double weave!!



Weaver Kathy O'Hern



Cloth woven and outfits sewn for a spring 2020 wedding in Ireland. Linen/cotton/silk thread, weave structure is basketweave/twill/plain weave stripes. Photo of Kathy and husband Stan (good sport).

Weaving made for a fellow weaver friend using the tail hair of one of her horses.



Guild subgroups continue to communicate and plan for the future:

- Weave Structure Study Group is an informal group of weavers who are interested in studying various weave structures and applying that knowledge to the loom.
- Textile History Study Group examines historical textiles found in local museums.
- Additional groups on hold at this time.