



Weaving Guilds of OREGON

Show and Share |

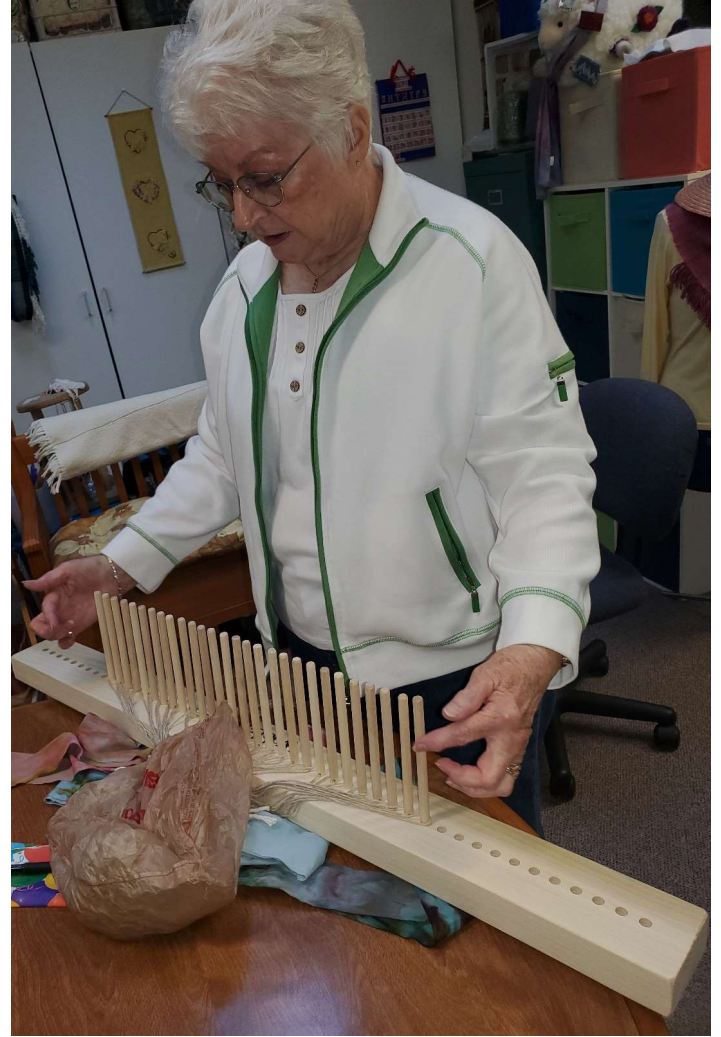
Today's Line up

- Webfoot Weavers
- Columbia Fibers Guild
- Central Oregon Spinners and Weavers
- Rouge Valley Handweavers
- Eugene Handweavers
- Saturday Handweaver
- Threadbenders



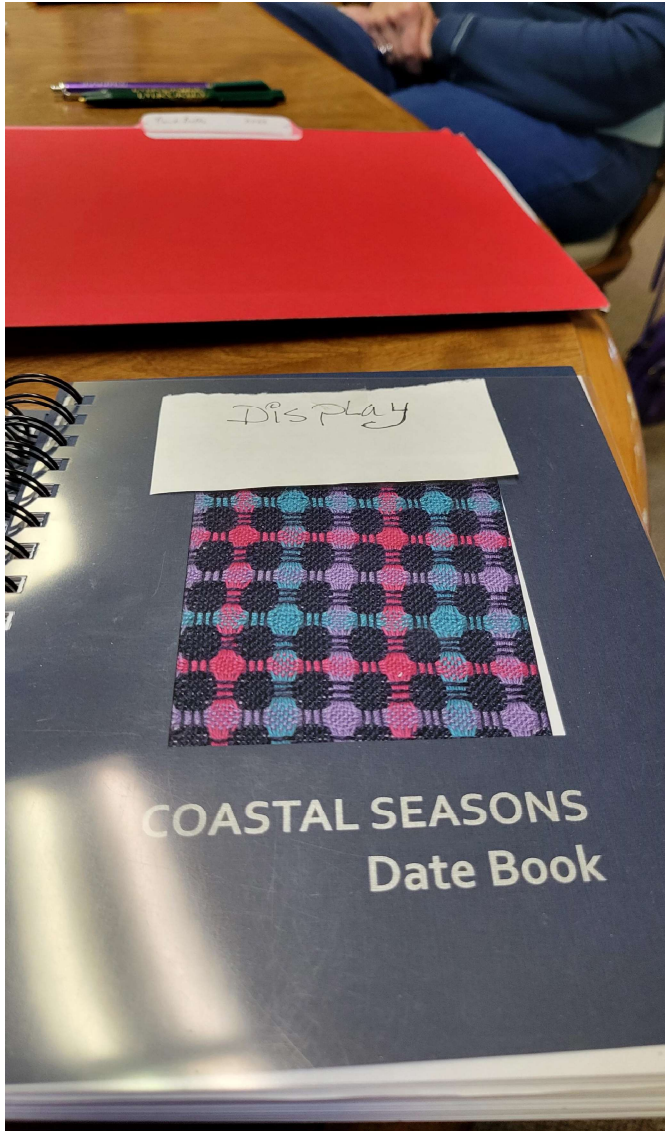
Webfoot Weavers







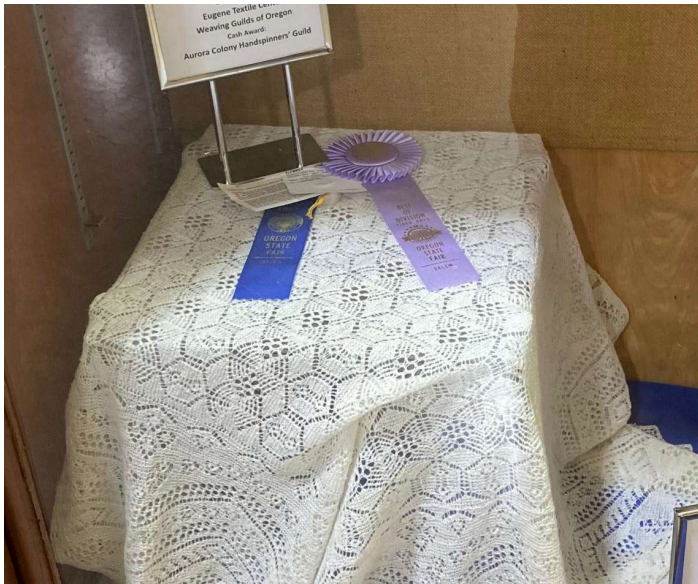




Columbia Fibers Guild







Where the Fiber Comes From

Row 1: Cards for 'Breed', 'Color', 'Fiber Diameter', and 'Wool Type' with corresponding wool samples.

Row 2: Cards for 'Breed', 'Color', 'Fiber Diameter', and 'Wool Type' with corresponding wool samples.

Row 3: Cards for 'Breed', 'Color', 'Fiber Diameter', and 'Wool Type' with corresponding wool samples.

How the Fiber is Processed

Step 1: Prepare/Process From Sheep to Fleeces - Shearing

Use combs, hand carder or a drum carder to prepare the fiber

Step 2: Prepare

Use combs, hand carder or a drum carder to prepare the fiber

Step 3: Spinning

Now is when makers can begin the creative process of designing and making almost anything they can think of - the sky is your limit.

It's Yarn - Now what?

Now is when makers can begin the creative process of designing and making almost anything they can think of - the sky is your limit.

Choose your own interest and make it your passion!

Start small with hats and scarves, or not, go BIG. Work at your own pace.

This display is presented by COLUMBIA FIBERS CO. LTD.

How the Fiber is Used

Products shown include: Felted Figurine, Wool Sweater, Headband, Wool Rug, Fine Wool Shawl, Wool Mulch, Wool Insulation in Carpets, Wool Rope, and Wool Card.

Brochures include: 'Wool Facts', 'Wool Care', 'Wool in the Home', and 'CONNIE CRUMB'.

Gorge Handweavers







Central Oregon Spinners and Weavers





Rigid Heddle Study Group

Outreach Education – Central Oregon Collective non-profit, local 4H fiber club and Crystal Peaks Youth



John Mullarkey Tablet Weaving Workshop May 13 and 14, 2024



COSW Spinning Study –Exotic Fibers.... Mink, Camel, Cashmere and super fine Merino





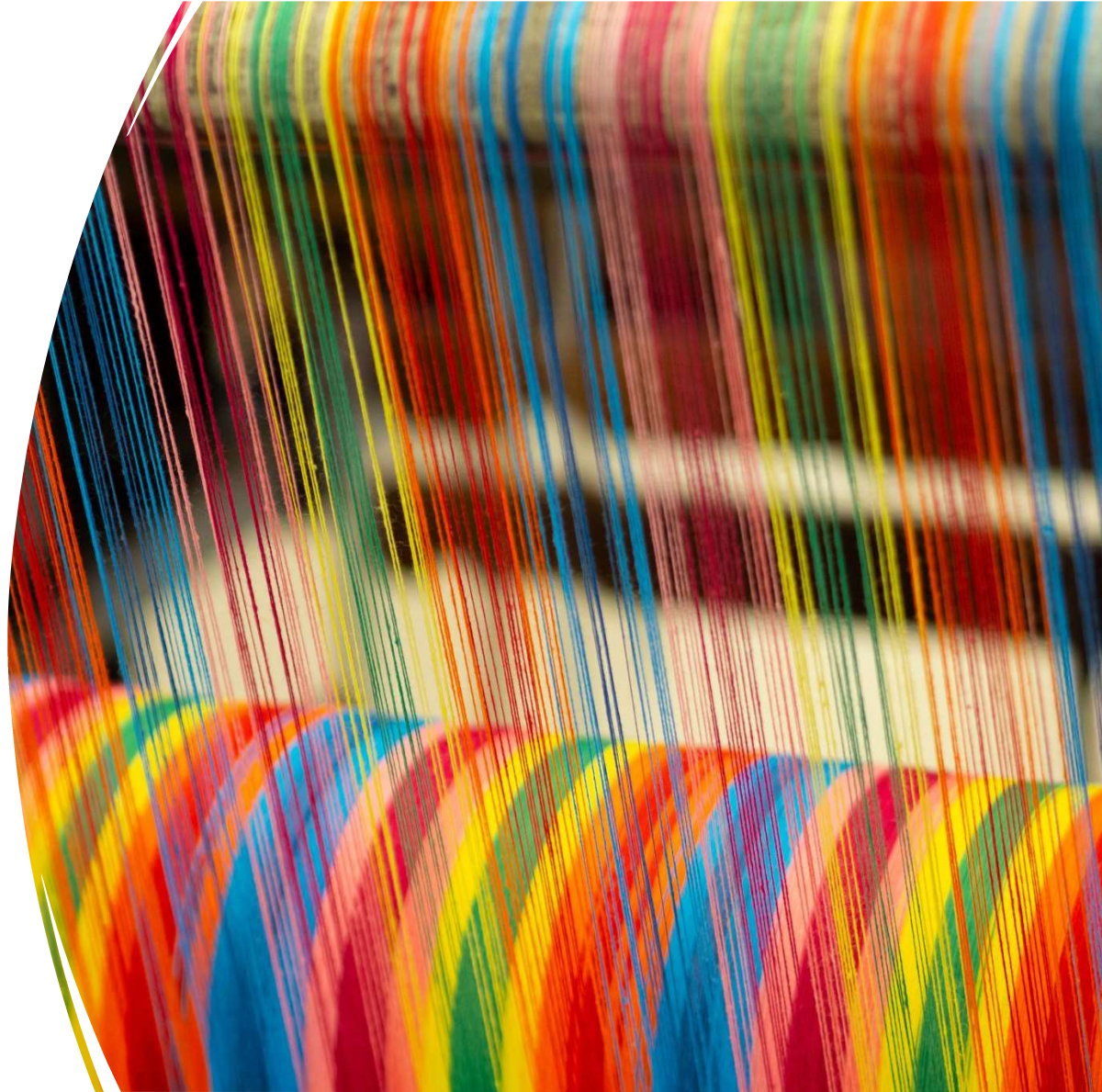
Bonnie Tarses – Horoscope Shawls Study Group
<https://bonnietarses.com>

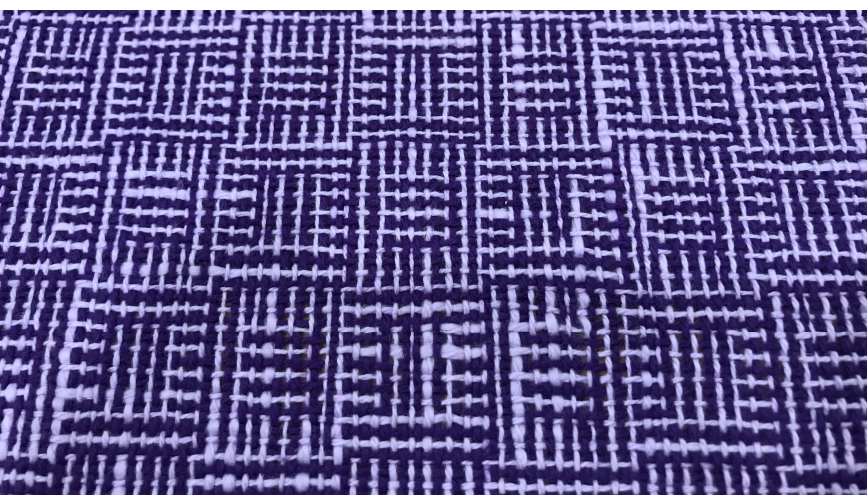


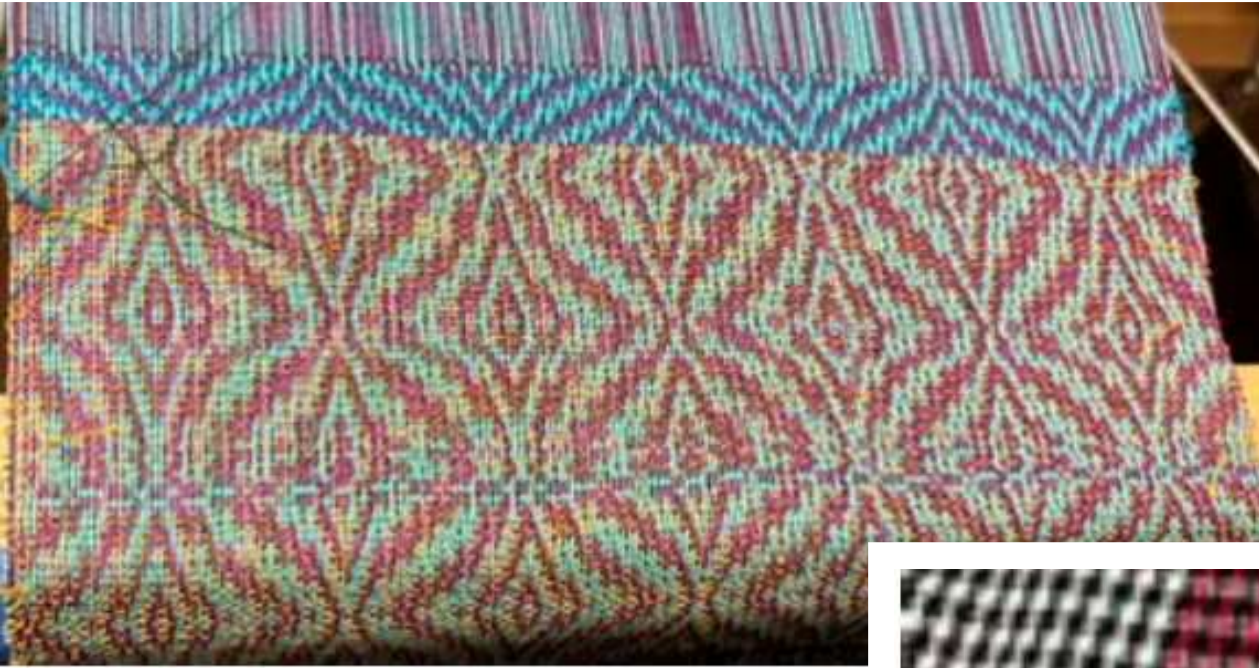
Jefferson County, Deschutes County, Crook County and State Fairs



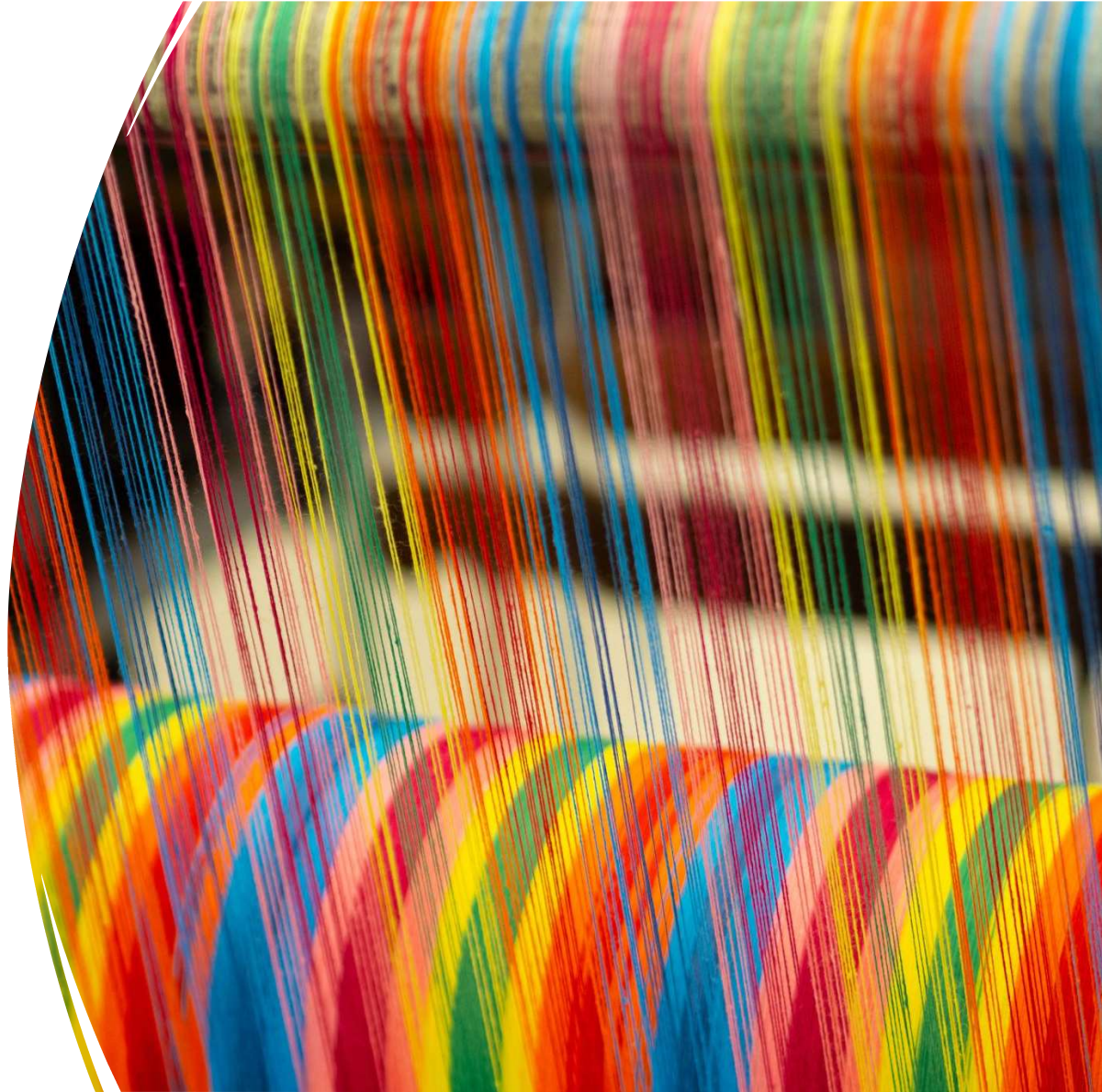
Rogue Valley Handweavers







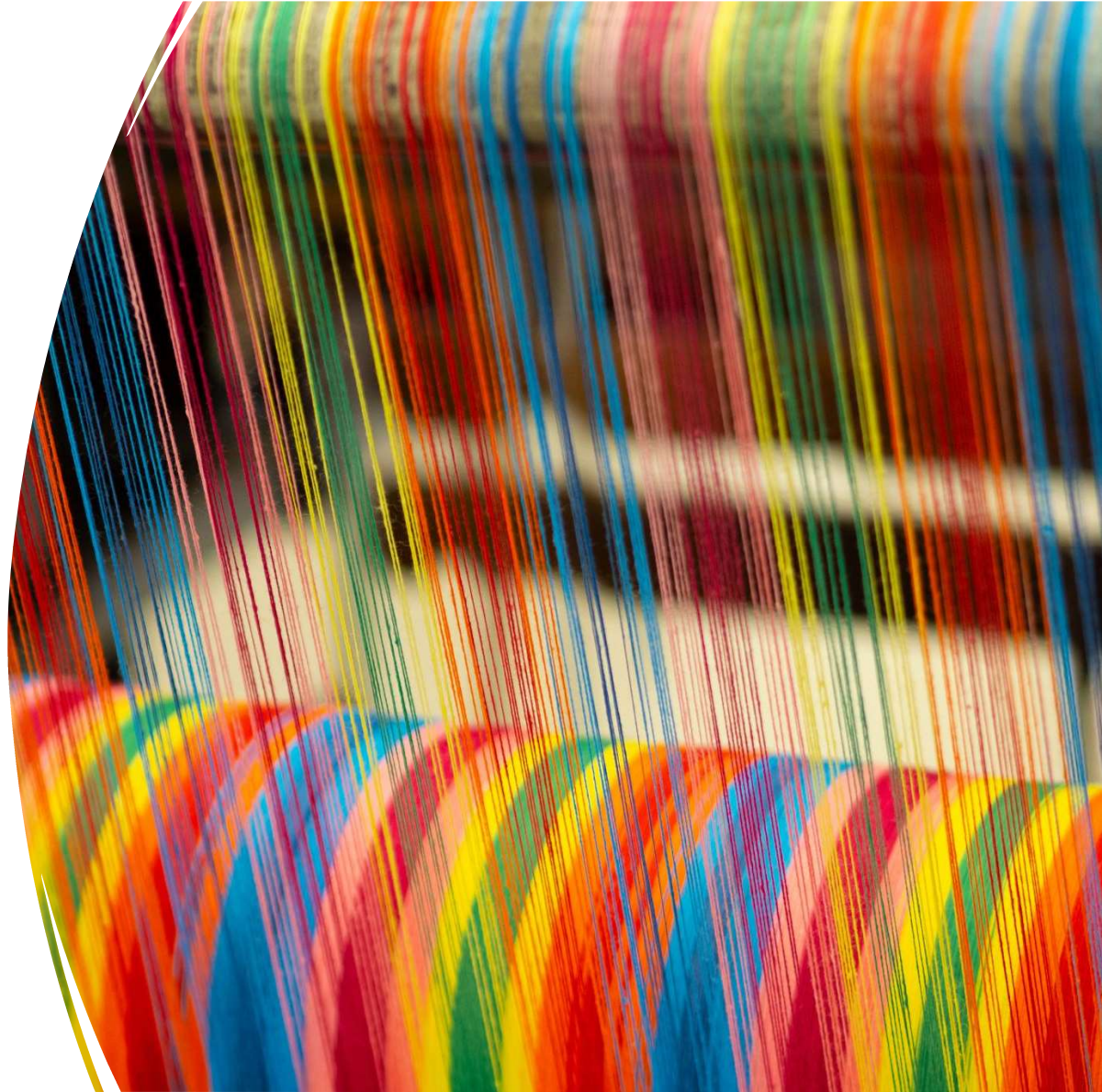
Eugene Weavers Guild







Saturday Handweavers Guild



SHOW & SHARE
NATIONAL PARK CHALLENGES



SHOW & SHARE WHAT I WOVE THIS SUMMER



Miranda Caroligne -
National Parks
Challenge (Pinnacles)
and "Journey Stick"
weaving



Kathy Fennel - Complex Weavers submission : optical illusions series: flowers



Threadbenders Guild

